

CONNECTICUT RESOURCES RECOVERY AUTHORITY

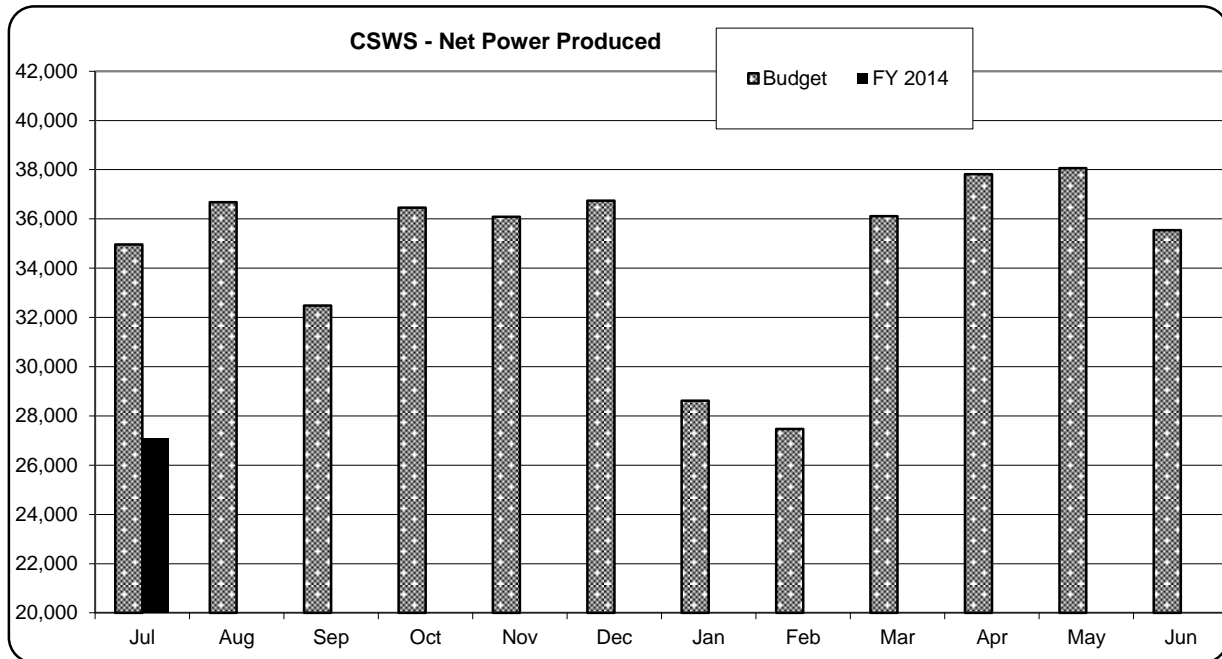
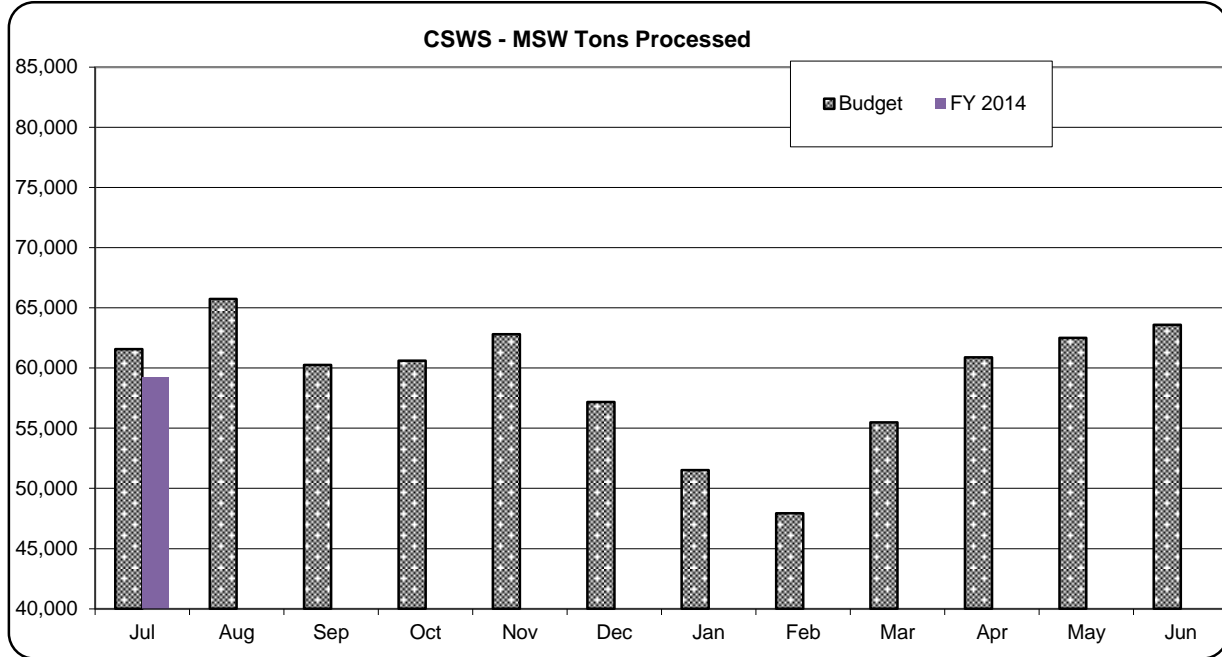
July 2013 Monthly Operational Summary

This report provides information on the operations of the two waste-to energy projects for the period ending July 31, 2013. Attached are individual, detailed reports on each of the two projects. The following table provides a summary of key operating parameters for each of the projects and the South Meadow Station's jet turbines.

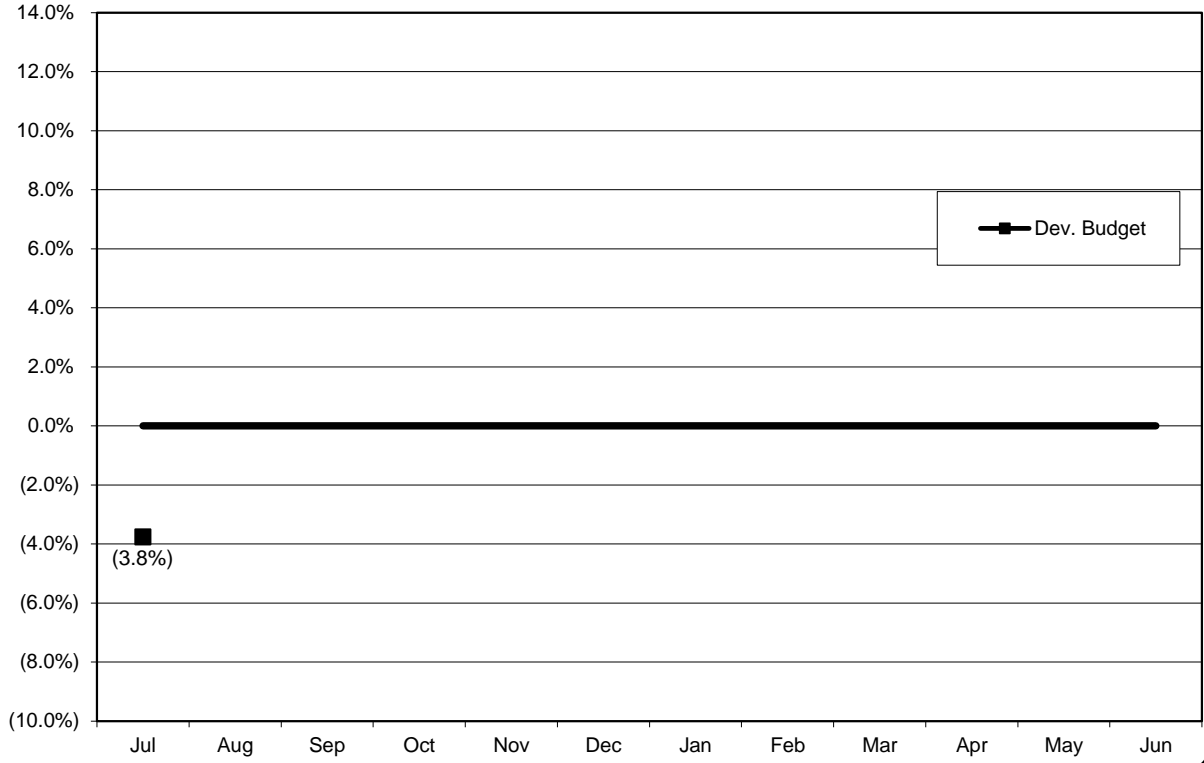
Project/ Item	Fiscal Year			Fiscal Year-To-Date			Monthly		
	2012	2013	Change	2013	2014	Change	Jul 12	Jul 13	Change
Mid-Connecticut & CSWS									
Tons MSW Processed	824,042	725,792	(11.9%)	68,843	59,239	(14.0%)	68,843	59,239	(14.0%)
Steam (klbs)	4,888,455	4,471,488	(8.5%)	418,736	340,801	(18.6%)	418,736	340,801	(18.6%)
(% MCR)	80.3%	73.7%		81.2%	66.1%		81.2%	66.1%	
Power Net MWhr)	404,466	371,481	(8.2%)	33,606	27,065	(19.5%)	33,606	27,065	(19.5%)
Southeast									
Tons MSW Processed	264,245	251,568	(4.8%)	21,532	23,901	11.0%	21,532	23,901	11.0%
Steam (klbs)	1,560,530	1,504,523	(3.6%)	134,101	129,846	(3.2%)	134,101	129,846	(3.2%)
(% MCR)	96.8%	93.6%		98.3%	95.1%		98.3%	95.1%	
Power Net MWhr)	135,098	128,914	(4.6%)	11,489	11,562	0.6%	11,489	11,562	0.6%
South Meadow Jets									
Net MWH	1,981.63	1,384.97	(30.1%)	0.00	766.69	-	0.00	766.69	-

MID-CONNECTICUT PROJECT & CSWS July 2013 Monthly Operational Summary

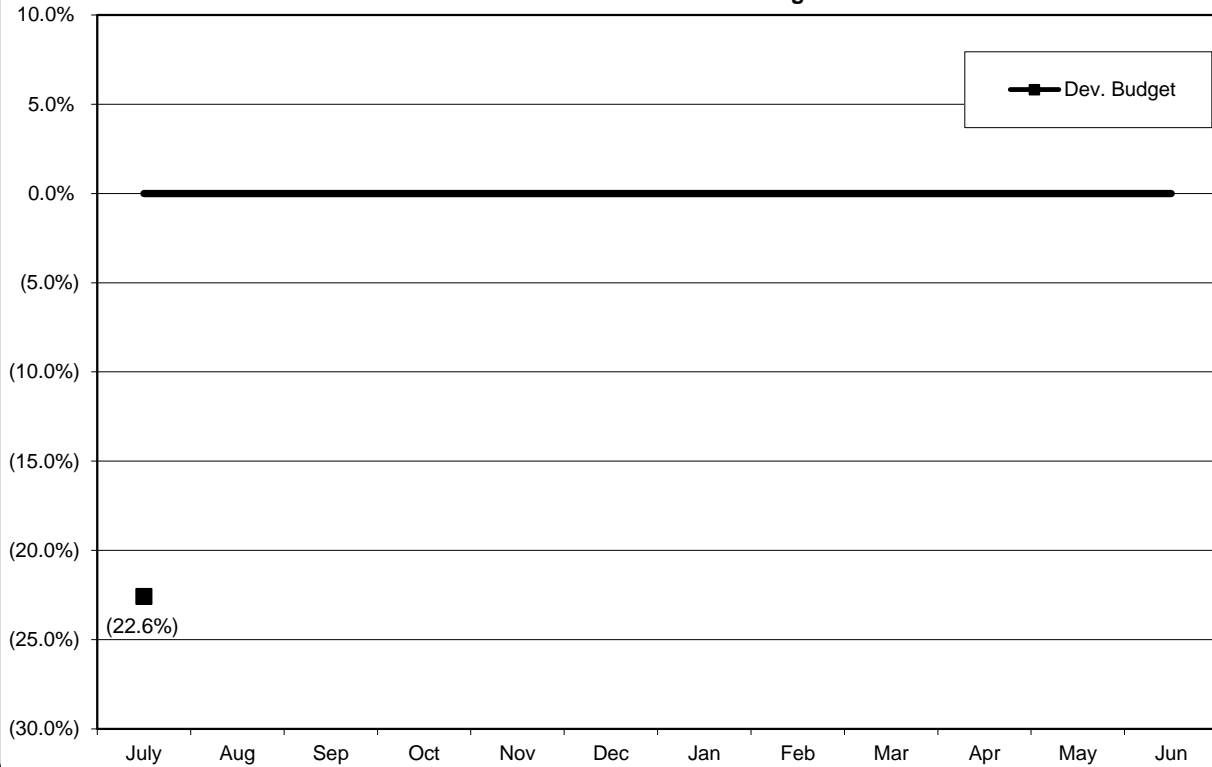
Item	Fiscal Year			Fiscal Year-To-Date			Monthly		
	2012	2013	Change	2013	2014	Change	Jul 12	Jul 13	Change
Tons MSW Processed	824,042	725,792	(11.9%)	68,843	59,239	(14.0%)	68,843	59,239	(14.0%)
Steam (klbs)	4,888,455	4,471,488	(8.5%)	418,736	340,801	(18.6%)	418,736	340,801	(18.6%)
(% MCR)	80.3%	73.7%		81.2%	66.1%		81.2%	66.1%	
Power Net MWhr)	404,466	371,481	(8.2%)	33,606	27,065	(19.5%)	33,606	27,065	(19.5%)



CSWS - Tons Processed - Deviation from Budget



Power Sold - Deviation from Budget



Unit Capacity Factors

Month	Boiler 11	Boiler 12	Boiler 13
Jul 13	44%	63%	91%
Aug 13			
Sep 13			
Oct 13			
Nov 13			
Dec 13			
Jan 14			
Feb 14			
Mar 14			
Apr 14			
May 14			
Jun 14			

Unscheduled Downtime

Date Began	Date Ended	Boiler	Duration (Hrs.)	Reason
07/02/13	07/09/13	11	176.92	Superheater repairs
07/05/13	07/11/13	12	135.48	Grate failure
07/20/13	07/22/13	12	59.29	Superheater repairs
07/28/13	07/28/13	12	17.65	Loss of Power to RDF conveyors
07/28/13	07/28/13	13	10.42	Loss of Power to RDF conveyors
07/30/13	07/30/13	12	3.78	RDF feed issues
07/30/13	07/31/13	11	34.62	Superheater repairs

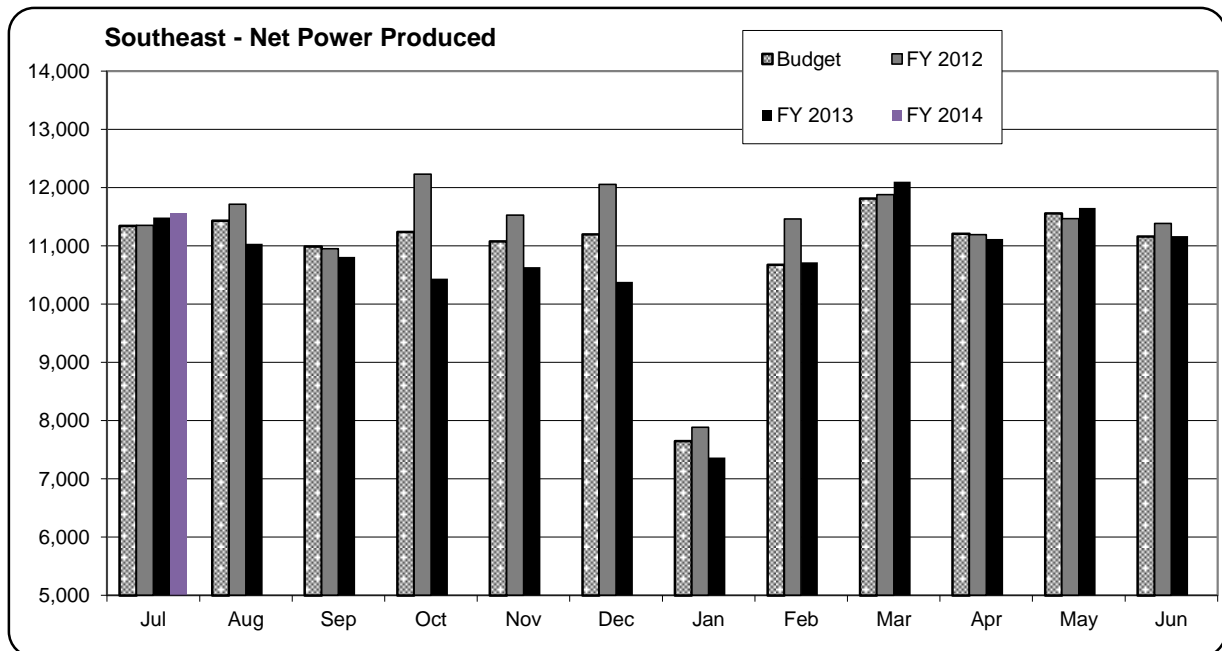
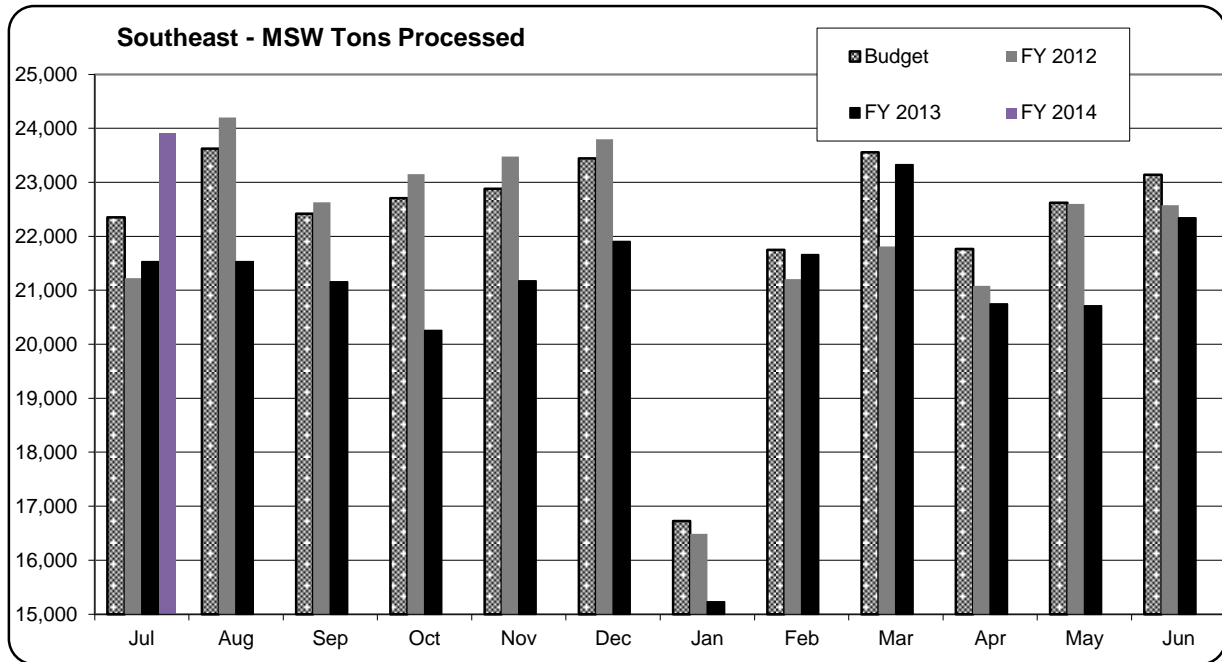
Scheduled Downtime

Date Began	Date Ended	Boiler	Duration (Hrs.)	Work Performed
07/22/13	07/28/13	11	163.80	Cleaning outage/Superheater repair

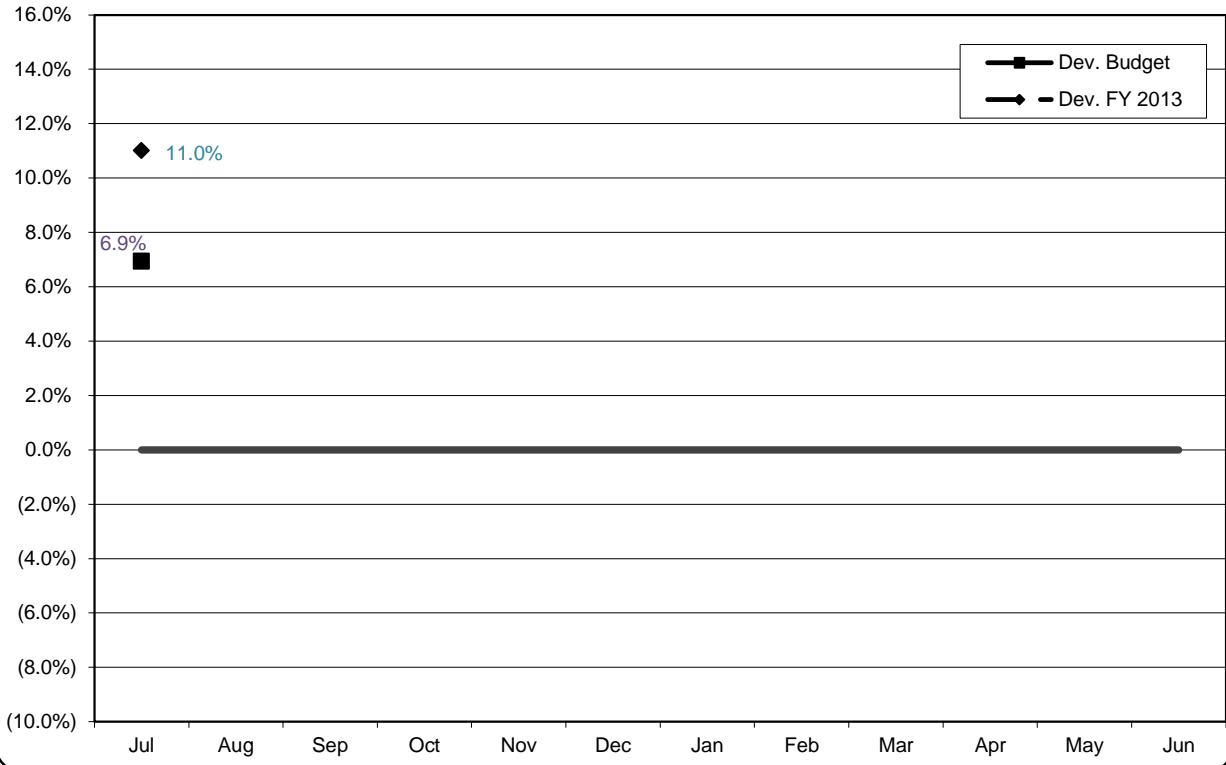
SOUTHEAST (PRESTON) PROJECT

July 2013 Monthly Operational Summary

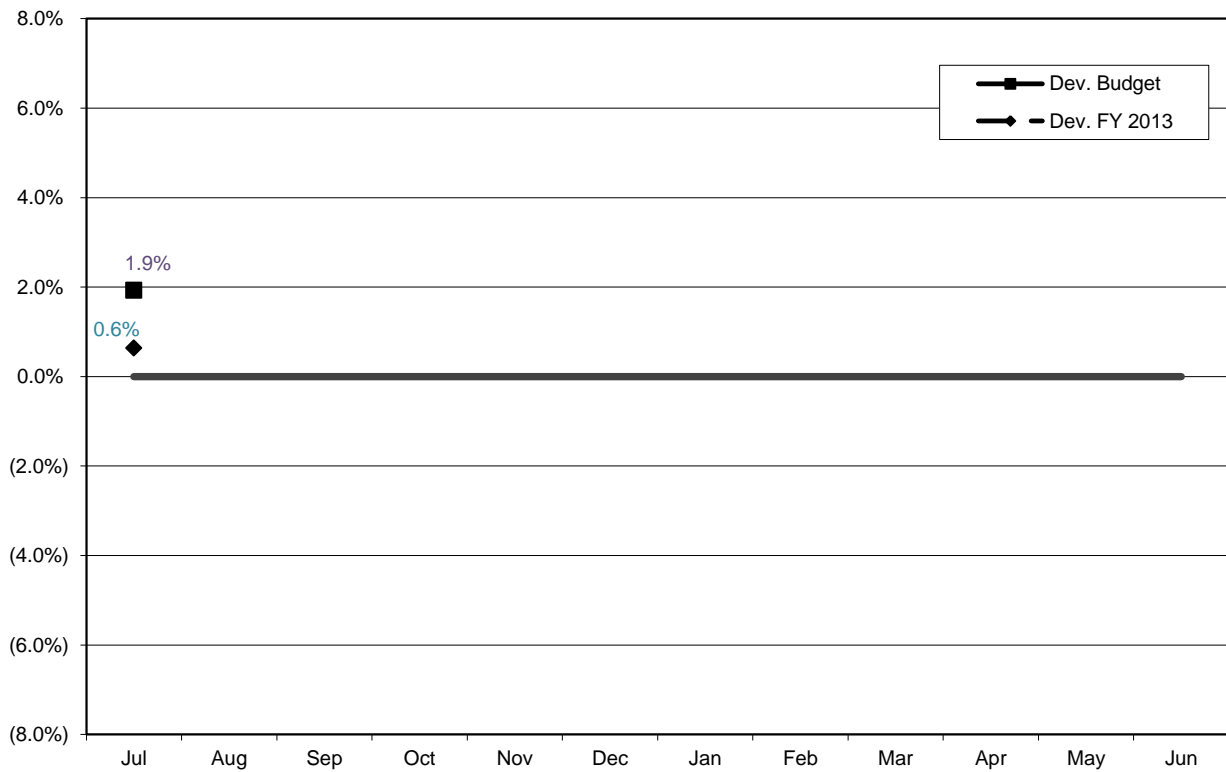
Item	Fiscal Year			Fiscal Year-To-Date			Monthly		
	2012	2013	Change	2013	2014	Change	Jul 12	Jul 13	Change
Tons MSW Processed	264,245	251,568	(4.8%)	21,532	23,901	11.0%	21,532	23,901	11.0%
Steam (klbs)	1,560,530	1,504,523	(3.6%)	134,101	129,846	(3.2%)	134,101	129,846	(3.2%)
(% MCR)	96.8%	93.6%		98.3%	95.1%		98.3%	95.1%	
Power Net MWhr)	135,098	128,914	(4.6%)	11,489	11,562	0.6%	11,489	11,562	0.6%



Southeast - Tons Processed - Deviation from Budget and Last Year



Southeast - Power Sold - Deviation from Budget and Last Year



Unit Capacity Factors

Month	Boiler 1	Boiler 2
Jul 13	93%	97%
Aug 13		
Sep 13		
Oct 13		
Nov 13		
Dec 13		
Jan 14		
Feb 14		
Mar 14		
Apr 14		
May 14		
Jun 14		

Unscheduled Downtime

Date Began	Date Ended	Boiler	Duration (Hrs.)	Reason
07/20/13	07/21/13	2	25.15	Tube leak

Scheduled Downtime

Date Began	Date Ended	Boiler	Duration (Hrs.)	Work Performed

SOUTH MEADOWS JETS
July 2013 Monthly Operational Summary

Date	Net Generation (MWH)	Comment
07/03/13	378.76	Dispatched by ISO-NE
07/19/13	387.93	Dispatched by ISO-NE